

Calling All 4-H Members & Volunteers - It's Re-Enrollment / Enrollment Time!

Our annual re-enrollment / enrollment process has started. To participate in county, district, state, and national 4-H programs, events, and activities, youth members must be enrolled and have an "approved" profile in 4-HOnline for the 2023 program year. Volunteers are required to have an "approved" 4-HOnline profile to work with youth and/or serve in most volunteer roles.



Re-Enrollment / Enrollment is for ALL 4-H Members / Volunteers (existing & new). Enrollment starts Jan. 9 - 2023, and is ongoing.

1



EXISTING Youth Member families should log into their 4-HOnline account and click on the "Enroll Now" link next to the profile that needs to be updated for 2023.

2

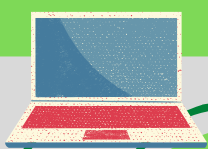
- Log in at www.4honline.com.
 - Update the profile as needed and submit it for approval.
 - Use the "Forgot My Password" feature if you've lost your password.
- *Do **not** create a 2nd profile; this will cause delays in your approval.



An EXISTING Volunteer should log into their 4-HOnline account and click on the "Enroll Now" link next to their name.

3

- Log in at www.4honline.com
 - Update your profile, complete the annual Minors Regulation Training, and submit your profile for approval.
 - Use the "Forgot My Password" feature if you've lost your password.
- *Do **not** create a 2nd profile; this will cause delays in your approval.



NEW Volunteers and those who do NOT have an existing 4-HOnline account should create a new profile.

4

- Log in at www.4honline.com.
 - Complete the required components for your selected Volunteer Type.
 - Level 1 Volunteers (club leaders, coaches, etc.) are certified to work directly with youth.
 - Level 2 Volunteers (activity volunteers) work under the supervision of an Extension professional and/or a Level 1 Volunteer

ALL VOLUNTEERS are required to complete the "Minor's Regulation Training annually.

5

- Depending on your system, you may need to enable pop-ups to view the training.
- Watch the entire video and answer the three questions to complete the module.
- Most profiles are updated within minutes, but a profile could take 24 hours to be marked complete.



Scan to get started.